

LANDSCAPING

The NOX Tiltrotator provides a third dimension, resulting in a reduced need to reposition your carrier machine. Ground damages and subsequent recultivation works are minimized. When laying out a garden or protecting slopes from erosion, the functionality of the NOX strongly shortens the construction time.



GENERAL CONSTRUCTION

Excavation or filling works can be realized precisely thanks to the NOX Tiltrotator with its tilt and turn function. The work can be done within the reach of the excavator arm without repositioning the carrier machine in a faster and more profitable way. The working safety on site is also increased when handling construction material.



RAIL CONSTRUCTION

Thanks to the NOX Tiltrotator, a lot of works that are difficult or impossible in rail construction due to the limited lateral mobility of the carrier machine can be realized. Works under already existing rails or at slopes as well as the exact positioning of sleepers are possible without repositioning the excavator thanks to the tilt and turn function.



ROAD CONSTRUCTION

When constructing roads, time is a crucial factor, but also precision and safety when e.g. levelling grounds, working at embankments or excavating soil. Thanks to the tilt and turn function of the NOX Tiltrotator, all works can be managed safely from the driver's cabin and less manpower is required in the danger area.



CABLE DUCT WORKS

The NOX Tiltrotator enables precise working under, in between or close to already existing cables. By tilting and turning the attachment in the required position, you can reduce manual cable duct works.

When maintaining existing cable ducts or installing new ones, works can be realized much more effectively and after all more safely.



MATERIAL HANDLING

Precise handling of e.g. palletized curbstones is no problem with the NOX Tiltrotator. The high and constant holding torque allows for a safe holding of loads. When operating in narrow areas, loads can be held e.g. around scaffolding or lifted over a fence.



SEWAGE WORKS

Working in sewer systems is characterized by little space and narrow areas. With a NOX Tiltrotator you can easily dig around gully wells or excavate from the required angle without repositioning the excavator. The endless rotation and the tilt angle to both sides allows for the exact positioning of the attachment.

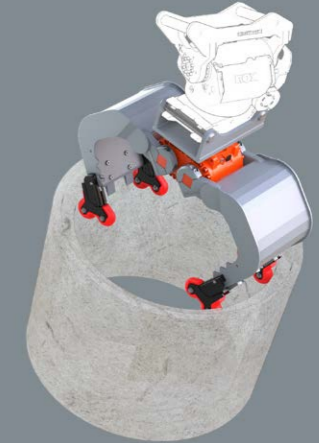


DEMOLITION

The immediate separation of debris at the demolition site saves a lot of time and recycling costs. Some building materials have to be disposed separately and with the NOX Tiltrotator you can separate those precisely from the other materials. After loading the material, the construction site can be cleared with e.g. a brush mounted to the NOX.



NOX Large variety of KINSHOFER attachments

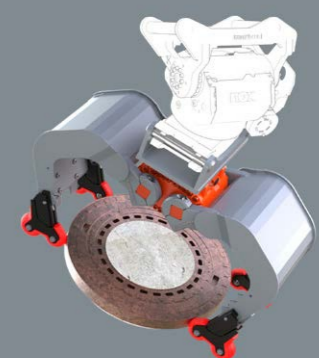


4-Grip

Easy mounting - easy handling of your tasks: that is our new 4-Grip for our demolition and sorting grabs of the D-series up to 9t operating weight as well as our multi purpose grabs of the A-series up to 9t. The device is easily bolt onto the shells and you can grab concrete units, curbstones etc. smoothly.

Thanks to its special kinematics you can grab items not only when closing the shells but also when opening. Shaft rings can be loaded and unloaded fast and easy without damaging them!

- ▷ **Economic solution**, as it is only an accessory that increases the flexibility of your attachment
- ▷ **Robust design**
- ▷ **Plastic compression rolls** avoid damage of the material to be gripped
- ▷ **Fast and easy mounting and removal** on site
- ▷ **Low additional weight:** only 28 kg in total
- ▷ **High load capacity of 750 kg**



Tiltrotator TR045NOX

| Type | Breakout force max. (ISO) (kN) | Tilt angle (°) | Tilt torque (kNm) | Rotation torque (kNm) | Weight (from kg) | Operating weight (t) |
|----------|--------------------------------|----------------|-------------------|-----------------------|------------------|----------------------|
| TR045NOX | 40 | 2 x 45° | 6,5 constant | 3,8 | 150 | 2,5 - 4,5 |

Standardpackage: TR045NOX, upper bracket direct mount, quick coupler system S-Lock, NOX-Control DF10
Other adapter, quick coupler & control systems on request.

Gripper

| Type | Opening (mm) | Closing force (kN) | Load capacity (kg) | Weight (from kg) |
|------|--------------|--------------------|--------------------|------------------|
| F07H | 424 | 7,5 | 300 | 77 |

Package consists of: gripper with integrated adapter
Other adapter systems on request.

Profillöffel

| Type | Bucket types | Width (mm) | Volume (liter) | Weight (kg) |
|----------|----------------|------------|----------------|-------------|
| SKP4-130 | grading bucket | 1100 | 130 | 90 |
| SKK4-60 | cable bucket | 300 | 60 | 50 |

Package consists of: grading bucket / cable bucket, adapter system S-Lock (S40)
Other bucket types, widths or volumes on request.

Gabelzinken

| Type | Tine adjustment | Load capacity max. (mm) | Width (mm) | Weight (kg) | Operating weight (t) |
|------|-----------------|-------------------------|------------|-------------|----------------------|
| GAF6 | mechanical | 1900 | 1000 | 140 | 3 - 6 |
| GAH6 | hydraulically | 1900 | 1000 | 160 | 3 - 6 |

Package consists of: fork tines, frame with adapter system S-Lock (S40)
Other adapter systems on request.



Note: other attachments and adapters on request

Demolition and sorting grabs with HPXdrive or hydraulic cylinder

| Type | Width (mm) | Opening (mm) | Volume (liter) | Weight (kg) | Operating weight (t) | Load capacity form locking (kg) | Closing force (kN) |
|--------------|------------|--------------|----------------|-------------|----------------------|---------------------------------|--------------------|
| D05TR-40 HPX | 420 | 1045 | 75 | 240 | 3 - 6 | 1500 | 18 |
| D05TR-40 | 420 | 1212 | 60 | 160 | 3 - 6 | 1500 | 21,5 |

Package consists of: demolition and sorting grab, hydraulic block for HPX, adapter system S-Lock (S40)

Available as an option: 4-Grip

Other adapter systems on request.

Mehrzweckgreifer mit HPXdrive oder Hydraulikzylinder

| Typ | Baubreite (mm) | Öffnungsweite (mm) | Inhalt (liter) | Eigen-gewicht (kg) | Dienst-gewicht (t) | Traglast bei Formschluss (kg) | Schliess-kraft (kN) |
|--------------|----------------|--------------------|----------------|--------------------|--------------------|-------------------------------|---------------------|
| A05TR-40 HPX | 386 | 1043 | 70 | 225 | 3 - 6 | 1500 | 18 |
| A05TR-40 | 386 | 1233 | 70 | 165 | 3 - 6 | 1500 | 21 |

Package consists of: multi purpose grab, hydraulic block for HPX, adapter system S-Lock (S40)

Available as an option: 4-Grip

Other adapter systems on request.

4-Grip

| Type | For grab types | Load capacity (kg) | Weight (kg) | Operating weight (t) |
|-------------------|----------------|--------------------|-------------|----------------------|
| KM 685-05-D04-A04 | D05TR / A05TR | 750 | 24 | <6 |

Compactor wheel

| Type | Diameter compactor wheel (mm) | Width compactor wheel (mm) | Weight (kg) | Operating weight (t) |
|------|-------------------------------|----------------------------|-------------|----------------------|
| RC1 | 500 | 400 | 300 | 1,5 - 4 |

Package consists of: compactor wheel

Optional adapter systems and other widths on request.

Note: other attachments and adapters on request

Tiltrotator TR07NOX

| Type | Breakout force max. (ISO) (kN) | Tilt angle (°) | Tilt torque (kNm) | Rotation torque (kNm) | Weight (from kg) | Operating weight (t) |
|---------|--------------------------------|----------------|-------------------|-----------------------|------------------|----------------------|
| TR07NOX | 50 | 2 x 50° | 11 constant | 4,7 | 200 | 4 - 7 |

Standardpackage: TR07NOX, upper bracket direct mount, quick coupler system S-Lock, NOX-Control DF10
Other adapter, quick coupler & control systems on request.

Gripper

| Type | Opening (mm) | Closing force (kN) | Load capacity (kg) | Weight (from kg) |
|-------|--------------|--------------------|--------------------|------------------|
| TRG07 | 424 | 7,5 | 300 | 40 |
| F07H | 424 | 7,5 | 300 | 77 |

Package consists of: gripper / gripper with integrated adapter

Other adapter systems on request.

Profil buckets

| Type | Bucket types | Width (mm) | Volume (liter) | Weight (kg) |
|----------|----------------|------------|----------------|-------------|
| SKP4-160 | grading bucket | 1100 | 160 | 110 |
| SKK6-160 | cable bucket | 300 | 160 | 75 |

Package consists of: grading bucket / cable bucket, adapter system S-Lock (S45)

Other bucket types, widths or volumes on request.

Levelling bars with roller

| Type | Width (mm) | Weight (kg) | Operating weight (t) |
|------------|------------|-------------|----------------------|
| AVB 8-1800 | 1800 | 200 | <8 |
| AVB 8-2100 | 2100 | 300 | <8 |
| AVB 8-2200 | 2200 | 420 | <8 |

Package consists of: levelling bar with roller, adapter system S-Lock (S45)

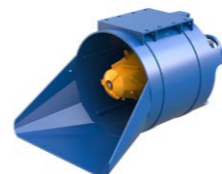
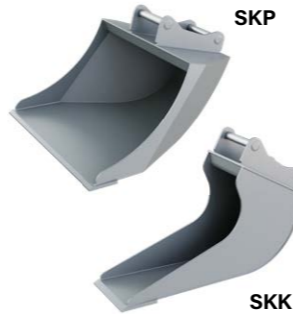
Other adapter systems on request.

Fork tines

| Type | Tine adjustment | Load capacity max. (mm) | Width (mm) | Weight (kg) | Operating weight (t) |
|------|-----------------|-------------------------|------------|-------------|----------------------|
| GAF6 | mechanical | 1900 | 1000 | 140 | 3 - 6 |
| GAH6 | hydraulically | 1900 | 1000 | 160 | 3 - 6 |
| GAF8 | mechanical | 1900 | 1200 | 190 | 6 - 8 |
| GAH8 | hydraulically | 1900 | 1200 | 210 | 6 - 8 |

Package consists of: fork tines, frame with adapter system S-Lock (S45)

Other adapter systems on request.



Demolition and sorting grabs with HPXdrive or hydraulic cylinder

| Type | Width (mm) | Opening (mm) | Volume (liter) | Weight (kg) | Operating weight (t) | Load capacity form locking (kg) | Closing force (kN) |
|--------------|------------|--------------|----------------|-------------|----------------------|---------------------------------|--------------------|
| D07TR-45 HPX | 470 | 1350 | 150 | 310 | 5 - 8 | 2000 | 18 |
| D07TR-45 | 470 | 1345 | 90 | 180 | 5 - 8 | 2000 | 21 |

Package consists of: demolition and sorting grab, hydraulic block for HPX, adapter system S-Lock (S45)

Available as an option: 4-Grip

Other adapter systems on request.

Multi purpose grabs with HPXdrive or hydraulic cylinder

| Type | Width (mm) | Opening (mm) | Volume (liter) | Weight (kg) | Operating weight (t) | Load capacity form locking (kg) | Closing force (kN) |
|--------------|------------|--------------|----------------|-------------|----------------------|---------------------------------|--------------------|
| A07TR-45 HPX | 450 | 1344 | 145 | 305 | 5 - 8 | 2000 | 18 |
| A07TR-45 | 450 | 1340 | 100 | 225 | 5 - 8 | 2000 | 21 |

Package consists of: multi purpose grab, hydraulic block for HPX, adapter system S-Lock (S45)

Available as an option: 4-Grip

Other adapter systems on request.

Clamshell buckets with HPXdrive

| Type | Width (mm) | Opening (mm) | Volume (liter) | Weight (kg) | Operating weight (t) | Load capacity (kg) | Closing force (kN) |
|--------------|------------|--------------|----------------|-------------|----------------------|--------------------|--------------------|
| C07TR-40 HPX | 400 | 1110 | 115 | 295 | 3 - 7 | 3000 | 22 |
| C07TR-50 HPX | 500 | 1110 | 140 | 310 | 3 - 7 | 3000 | 22 |
| C07TR-60 HPX | 600 | 1110 | 170 | 325 | 3 - 7 | 3000 | 22 |

Package consists of: clamshell bucket, hydraulic block for HPX, adapter system S-Lock (S45)

Other adapter systems on request.

4-Grip

| Type | For grab types | Load capacity (kg) | Weight (kg) | Operating weight (t) |
|-------------------------|----------------|--------------------|-------------|----------------------|
| KM 685-05-D06/09-A06/09 | D07TR & A07TR | 600 | 28 | <11 |

Compactor wheel

| Type | Diameter compactor wheel (mm) | Width compactor wheel (mm) | Weight (kg) | Operating weight (t) |
|------|-------------------------------|----------------------------|-------------|----------------------|
| RC2 | 600 | 500 | 330 | 4 - 8 |

Package consists of: compactor wheel

Optional adapter systems and other widths on request.

Cone crusher bucket

| Type | Rotation torque (Nm) | Speed range (rpm) | Drum diameter (mm) | Length (mm) | Weight (kg) | Operating weight (t) |
|--------------|----------------------|-------------------|--------------------|-------------|-------------|----------------------|
| Cone Crusher | 6320 - 10112 | 36 - 100 | 600 | 1300 | 376 | 3 - 10 |

Package consists of: cone crusher bucket

Optional adapter systems on request.

Tiltrotator TR11NOX

| Type | Breakout force max. (ISO) (kN) | Tilt angle (°) | Tilt torque (kNm) | Rotation torque (kNm) | Weight (from kg) | Operating weight (t) |
|---------|--------------------------------|----------------|-------------------|-----------------------|------------------|----------------------|
| TR11NOX | 75 | 2 x 50° | 16 constant | 7,5 | 320 | 6 - 11 |

Standardpackage: TR11NOX, upper bracket direct mount, quick coupler system S-Lock, NOX-Control DF10
Other adapter, quick coupler & control systems on request.

Gripper

| Type | Opening (mm) | Closing force (kN) | Load capacity (kg) | Weight (from kg) |
|-------|--------------|--------------------|--------------------|------------------|
| TRG11 | 644 | 10 | 500 | 77 |
| F11H | 644 | 10 | 500 | 131 |

Package consists of: gripper / gripper with integrated adapter

Other adapter systems on request.

Profil buckets

| Type | Bucket types | Width (mm) | Volume (liter) | Weight (kg) |
|-----------|----------------|------------|----------------|-------------|
| SKP6-300 | grading bucket | 1300 | 300 | 200 |
| SKK10-160 | cable bucket | 300 | 160 | 75 |

Package consists of: grading bucket / cable bucket, adapter system S-Lock (S50)

Other bucket types, widths or volumes on request.

Levelling bars with roller

| Type | Width (mm) | Weight (kg) | Operating weight (t) |
|------------|------------|-------------|----------------------|
| AVB 8-1800 | 1800 | 200 | <8 |
| AVB 8-2100 | 2100 | 300 | <8 |
| AVB 8-2200 | 2200 | 420 | <8 |

Package consists of: levelling bar with roller, adapter system S-Lock (S50)

Other adapter systems on request.

Fork tines

| Type | Tine adjustment | Load capacity max. (mm) | Width (mm) | Weight (kg) | Operating weight (t) |
|-------|-----------------|-------------------------|------------|-------------|----------------------|
| GAF8 | mechanical | 1900 | 1200 | 190 | 6 - 8 |
| GAH8 | hydraulically | 1900 | 1200 | 210 | 6 - 8 |
| GAF12 | mechanical | 2500 | 1200 | 200 | 9 - 12 |
| GAH12 | hydraulically | 2500 | 1200 | 220 | 9 - 12 |

Package consists of: fork tines, frame with adapter system S-Lock (S50)

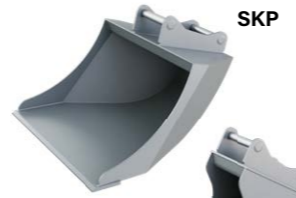
Other adapter systems on request.



TRG



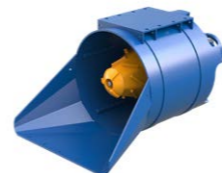
FH



SKP



SKK



Demolition and sorting grabs with HPXdrive or hydraulic cylinder

| Type | Width (mm) | Opening (mm) | Volume (liter) | Weight (kg) | Operating weight (t) | Load capacity form locking (kg) | Closing force (kN) |
|--------------|------------|--------------|----------------|-------------|----------------------|---------------------------------|--------------------|
| D11TR-50 HPX | 520 | 1545 | 220 | 360 | 7 - 12 | 2500 | 15,3 |
| D11TR-50 | 520 | 1665 | 165 | 305 | 7 - 12 | 2500 | 24 |

Package consists of: demolition and sorting grab, hydraulic block for HPX, adapter system S-Lock (S50)

Available as an option: 4-Grip

Other adapter systems on request.

Mehrzweckgreifer mit HPXdrive oder Hydraulikzylinder

| Typ | Baubreite (mm) | Öffnungsweite (mm) | Inhalt (Liter) | Eigen-gewicht (kg) | Dienst-gewicht (t) | Traglast bei Formschluss (kg) | Schliess-kraft (kN) |
|--------------|----------------|--------------------|----------------|--------------------|--------------------|-------------------------------|---------------------|
| A11TR-50 HPX | 500 | 1545 | 210 | 365 | 7 - 12 | 2500 | 15,3 |
| A11TR-50 | 500 | 1650 | 175 | 310 | 7 - 12 | 2500 | 25 |

Package consists of: multi purpose grab, hydraulic block for HPX, adapter system S-Lock (S50)

Available as an option: 4-Grip

Other adapter systems on request.

Grabgreifer mit HPXdrive

| Typ | Baubreite (mm) | Öffnungsweite (mm) | Inhalt (Liter) | Eigen-gewicht (kg) | Dienst-gewicht (t) | Traglast (kg) | Schliess-kraft (kN) |
|--------------|----------------|--------------------|----------------|--------------------|--------------------|---------------|---------------------|
| C11TR-40 HPX | 400 | 1250 | 145 | 265 | 5 - 11 | 3000 | 22 |
| C11TR-50 HPX | 500 | 1250 | 180 | 295 | 5 - 11 | 3000 | 22 |
| C11TR-60 HPX | 600 | 1250 | 220 | 315 | 5 - 11 | 3000 | 22 |

Package consists of: clamshell bucket, hydraulic block for HPX, adapter system S-Lock (S50)

Other adapter systems on request.

4-Grip

| Type | For grab types | Load capacity (kg) | Weight (kg) | Operating weight (t) |
|-------------------------|----------------|--------------------|-------------|----------------------|
| KM 685-05-D06/09-A06/09 | D11TR & A11TR | 600 | 28 | <11 |

Compactor wheel

| Type | Diameter compactor wheel (mm) | Width compactor wheel (mm) | Weight (kg) | Operating weight (t) |
|------|-------------------------------|----------------------------|-------------|----------------------|
| RC2 | 600 | 600 | 340 | 4 - 8 |
| RC3 | 700 | 600 | 360 | 8 - 14 |

Package consists of: compactor wheel

Optional adapter systems and other widths on request.

Cone crusher bucket

| Type | Rotation torque (Nm) | Speed range (rpm) | Drum diameter (mm) | Length (mm) | Weight (kg) | Operating weight (t) |
|--------------|----------------------|-------------------|--------------------|-------------|-------------|----------------------|
| Cone Crusher | 6320 - 10112 | 36 - 100 | 600 | 1300 | 376 | 3 - 10 |

Package consists of: cone crusher bucket

Optional adapter systems on request.

Tiltrotator TR14NOX

| Type | Breakout force max. (ISO) (kN) | Tilt angle (°) | Tilt torque (kNm) | Rotation torque (kNm) | Weight (from kg) | Operating weight (t) |
|---------|--------------------------------|----------------|-------------------|-----------------------|------------------|----------------------|
| TR14NOX | 110 | 2 x 50° | 31 constant | 11 | 485 | 10 - 14 |

Standardpackage: TR14NOX, upper bracket direct mount, quick coupler system S-Lock, NOX-Control DF10
Other adapter, quick coupler & control systems on request.

Gripper

| Type | Opening (mm) | Closing force (kN) | Load capacity (kg) | Weight (from kg) |
|-------|--------------|--------------------|--------------------|------------------|
| TRG19 | 734 | 18,5 | 900 | 127 |
| F19H | 734 | 18,5 | 900 | 265 |

Package consists of: gripper / gripper with integrated adapter

Other adapter systems on request.

Profil buckets

| Type | Bucket types | Width (mm) | Volume (liter) | Weight (kg) |
|-----------|----------------|------------|----------------|-------------|
| SKP14-600 | grading bucket | 1600 | 600 | 390 |
| SKK14-250 | cable bucket | 300 | 250 | 110 |

Package consists of: grading bucket / cable bucket, adapter system S-Lock (S60)

Other bucket types, widths or volumes on request.

Levelling bars with roller

| Type | Width (mm) | Weight (kg) | Operating weight (t) |
|-------------|------------|-------------|----------------------|
| AVB 24-2500 | 2500 | 420 | <24 |
| AVB 24-2700 | 2700 | 470 | <24 |

Package consists of: levelling bar with roller, adapter system S-Lock (S60)

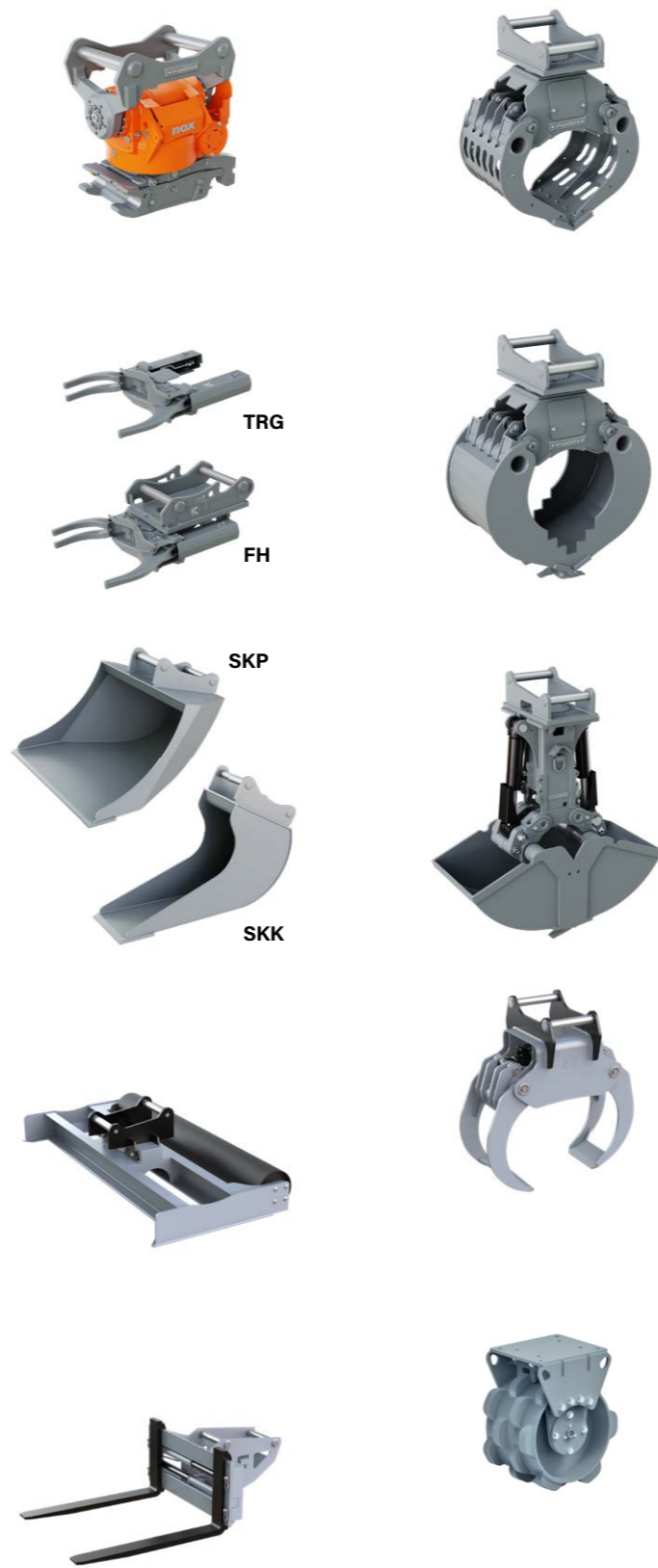
Other adapter systems on request.

Fork tines

| Type | Tine adjustment | Load capacity max. (mm) | Width (mm) | Weight (kg) | Operating weight (t) |
|-------|-----------------|-------------------------|------------|-------------|----------------------|
| GAF18 | mechanical | 4000 | 1200 | 340 | 13 - 18 |
| GAH18 | hydraulically | 4000 | 1200 | 340 | 13 - 18 |

Package consists of: fork tines, frame with adapter system S-Lock (S60)

Other adapter systems on request.



Demolition and sorting grabs

| Type | Width (mm) | Opening (mm) | Volume (liter) | Weight (kg) | Operating weight (t) | Load capacity (kg) | Closing force (kN) |
|----------|------------|--------------|----------------|-------------|----------------------|--------------------|--------------------|
| D14TR-60 | 600 | 1555 | 260 | 400 | 11 - 14 | 3000 | 30 |

Package consists of: demolition and sorting grab, adapter system S-Lock (S60)

Other adapter systems on request.

Multi purpose grabs

| Type | Width (mm) | Opening (mm) | Volume (liter) | Weight (kg) | Operating weight (t) | Load capacity (kg) | Closing force (kN) |
|----------|------------|--------------|----------------|-------------|----------------------|--------------------|--------------------|
| A14TR-60 | 600 | 1890 | 260 | 510 | 11 - 14 | 3000 | 30 |

Package consists of: multi purpose grab, adapter system S-Lock (S60)

Other adapter systems on request.

Clamshell bucket

| Type | Width (mm) | Opening (mm) | Volume (liter) | Weight (kg) | Operating weight (t) | Load capacity (kg) | Closing force (kN) |
|----------|------------|--------------|----------------|-------------|----------------------|--------------------|--------------------|
| C14TR-60 | 600 | 1645 | 245 | 510 | 11 - 14 | 4500 | 39 |

Package consists of: clamshell bucket, adapter system S-Lock (S60)

Other adapter systems on request.

Multi-Grip

| Type | Width (mm) | Opening (mm) | Volume (m²) | Weight (kg) | Operating weight (t) | Load capacity (kg) | Closing force (kN) |
|------|------------|--------------|-------------|-------------|----------------------|--------------------|--------------------|
| MG16 | 531 | 1822 | 0,36 | 474 | 12 - 18 | 8000 | 27 |

Package consists of: Multi-Grip, adapter system S-Lock (S60)

Other adapter systems on request.

Compactor wheel

| Type | Diameter compactor wheel (mm) | Width compactor wheel (mm) | Weight (kg) | Operating weight (t) |
|------|-------------------------------|----------------------------|-------------|----------------------|
| RC3 | 700 | 600 | 360 | 8 - 14 |

Package consists of: compactor wheel

Optional adapter systems and other widths on request.

Tiltrotator TR19NOX

| Type | Breakout force max. (ISO) (kN) | Tilt angle (°) | Tilt torque (kNm) | Rotation torque (kNm) | Weight (from kg) | Operating weight (t) |
|---------|--------------------------------|----------------|-------------------|-----------------------|------------------|----------------------|
| TR19NOX | 150 | 2 x 50° | 40,5 constant | 12 | 580 | 14 - 19 |

Standardpackage: TR19NOX, upper bracket direct mount, quick coupler system S-Lock, NOX-Control DF10
Other adapter, quick coupler & control systems on request.

Gripper

| Type | Opening (mm) | Closing force (kN) | Load capacity (kg) | Weight (from kg) |
|----------|--------------|--------------------|--------------------|------------------|
| TRG19 | 734 | 18,5 | 900 | 127 |
| F19H | 734 | 18,5 | 900 | 165 |
| RR-TRG19 | 822 | 30,1 | 5000 | 170 |

Package consists of: gripper / gripper with integrated adapter
Other adapter systems on request.

Profil buckets

| Type | Bucket types | Width (mm) | Volume (liter) | Weight (kg) |
|-----------|----------------|------------|----------------|-------------|
| SKP18-750 | grading bucket | 1700 | 750 | 520 |
| SKK22-300 | cable bucket | 300 | 300 | 260 |

Package consists of: grading bucket / cable bucket, adapter system S-Lock (S60)
Other bucket types, widths or volumes on request.

Levelling bars with roller

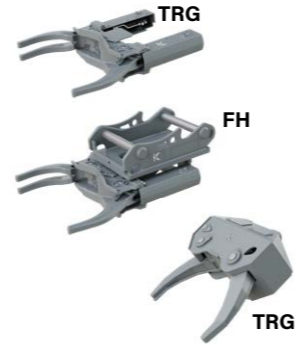
| Type | Width (mm) | Weight (kg) | Operating weight (t) |
|-------------|------------|-------------|----------------------|
| AVB 24-2500 | 2500 | 420 | <24 |
| AVB 24-2700 | 2700 | 470 | <24 |

Package consists of: levelling bar with roller, adapter system S-Lock (S60)
Other adapter systems on request.

Fork tines

| Type | Tine adjustment | Load capacity max. (mm) | Width (mm) | Weight (kg) | Operating weight (t) |
|-------|-----------------|-------------------------|------------|-------------|----------------------|
| GAF18 | mechanical | 4000 | 1200 | 340 | 13 - 18 |
| GAH18 | hydraulically | 4000 | 1200 | 340 | 13 - 18 |
| GAF20 | mechanical | 4000 | 1200 | 420 | 19 - 20 |
| GAH20 | hydraulically | 4000 | 1200 | 420 | 19 - 20 |

Package consists of: fork tines, frame with adapter system S-Lock (S60)
Other adapter systems on request.



Demolition and sorting grabs

| Type | Width (mm) | Opening (mm) | Volume (liter) | Weight (kg) | Operating weight (t) | Load capacity (kg) | Closing force (kN) |
|-----------|------------|--------------|----------------|-------------|----------------------|--------------------|--------------------|
| D19TR-60 | 600 | 1550 | 225 | 450 | 14 - 19 | 4000 | 32 |
| D19TR-80 | 800 | 1550 | 300 | 500 | 14 - 19 | 4000 | 27 |
| D19TR-100 | 1000 | 1870 | 500 | 595 | 14 - 19 | 4000 | 25 |

Package consists of: demolition and sorting grab, adapter system S-Lock (S60)
Other adapter systems on request.

Multi purpose grabs

| Type | Width (mm) | Opening (mm) | Volume (liter) | Weight (kg) | Operating weight (t) | Load capacity (kg) | Closing force (kN) |
|----------|------------|--------------|----------------|-------------|----------------------|--------------------|--------------------|
| A19TR-60 | 600 | 1900 | 300 | 570 | 14 - 19 | 4000 | 27 |

Package consists of: multi purpose grab, adapter system S-Lock (S60)
Other adapter systems on request.

Clamshell bucket

| Type | Width (mm) | Opening (mm) | Volume (liter) | Weight (kg) | Operating weight (t) | Load capacity (kg) | Closing force (kN) |
|----------|------------|--------------|----------------|-------------|----------------------|--------------------|--------------------|
| C19TR-60 | 600 | 1655 | 245 | 575 | 14 - 19 | 4500 | 42 |

Package consists of: clamshell bucket, adapter system S-Lock (S60)
Other adapter systems on request.

Multi-Grip

| Type | Width (mm) | Opening (mm) | Volume (m²) | Weight (kg) | Operating weight (t) | Load capacity (kg) | Closing force (kN) |
|------|------------|--------------|-------------|-------------|----------------------|--------------------|--------------------|
| MG16 | 531 | 1822 | 0,36 | 474 | 12 - 18 | 8000 | 27 |
| MG20 | 531 | 2279 | 0,52 | 560 | 16 - 22 | 10000 | 33 |

Package consists of: Multi-Grip, adapter system S-Lock (S60)
Other adapter systems on request.

Compactor wheel

| Type | Diameter compactor wheel (mm) | Width compactor wheel (mm) | Weight (kg) | Operating weight (t) |
|------|-------------------------------|----------------------------|-------------|----------------------|
| RC4 | 1000 | 600 | 800 | 14 - 20 |

Package consists of: compactor wheel
Optional adapter systems and other widths on request.

Tiltrotator TR19NOX

| Type | Breakout force max. (ISO) (kN) | Tilt angle (°) | Tilt torque (kNm) | Rotation torque (kNm) | Weight (from kg) | Operating weight (t) |
|---------|--------------------------------|----------------|-------------------|-----------------------|------------------|----------------------|
| TR25NOX | 170 | 2 x 50° | 51,7 constant | 15 | 860 | 19 - 25 |

Standardpackage: TR25NOX, upper bracket direct mount, quick coupler system S-Lock, NOX-Control DF10

Other adapter, quick coupler & control systems on request.

Gripper

| Type | Opening (mm) | Closing force (kN) | Load capacity (kg) | Weight (from kg) |
|----------|--------------|--------------------|--------------------|------------------|
| TRG25 | 1137 | 19,5 | 1300 | 224 |
| F25H | 1137 | 19,5 | 1300 | 265 |
| RR-TRG25 | 822 | 30,1 | 5000 | 187 |

Package consists of: gripper / gripper with integrated adapter

Other adapter systems on request.

Profil buckets

| Type | Bucket types | Width (mm) | Volume (liter) | Weight (kg) |
|------------|----------------|------------|----------------|-------------|
| SKP24-1200 | grading bucket | 1800 | 1200 | 780 |
| SKK22-300 | cable bucket | 300 | 300 | 260 |

Package consists of: grading bucket / cable bucket, adapter system S-Lock (S70)

Other bucket types, widths or volumes on request.

Levelling bars with roller

| Type | Width (mm) | Weight (kg) | Operating weight (t) |
|-------------|------------|-------------|----------------------|
| AVB 24-2500 | 2500 | 420 | <24 |
| AVB 24-2700 | 2700 | 470 | <24 |

Package consists of: levelling bar with roller, adapter system S-Lock (S70)

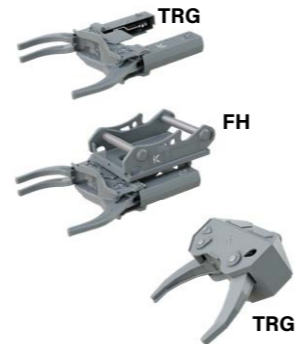
Other adapter systems on request.

Fork tines

| Type | Tine adjustment | Load capacity max. (mm) | Width (mm) | Weight (kg) | Operating weight (t) |
|-------|-----------------|-------------------------|------------|-------------|----------------------|
| GAF20 | mechanical | 4000 | 1200 | 420 | 19 - 20 |
| GAH20 | hydraulically | 4000 | 1200 | 420 | 19 - 20 |
| GAF24 | mechanical | 5000 | 1200 | 440 | 21 - 24 |
| GAH24 | hydraulically | 5000 | 1200 | 440 | 21 - 24 |

Package consists of: fork tines, frame with adapter system S-Lock (S70)

Other adapter systems on request.



Demolition and sorting grabs

| Type | Width (mm) | Opening (mm) | Volume (liter) | Weight (kg) | Operating weight (t) | Load capacity (kg) | Closing force (kN) |
|-----------|------------|--------------|----------------|-------------|----------------------|--------------------|--------------------|
| D25TR-84 | 840 | 1890 | 380 | 725 | 18 - 25 | 5000 | 42 |
| D25TR-100 | 1000 | 1890 | 450 | 770 | 18 - 25 | 5000 | 42 |

Package consists of: demolition and sorting grab, adapter system S-Lock (S70)

Other adapter systems on request.

Multi purpose grabs

| Type | Width (mm) | Opening (mm) | Volume (liter) | Weight (kg) | Operating weight (t) | Load capacity (kg) | Closing force (kN) |
|----------|------------|--------------|----------------|-------------|----------------------|--------------------|--------------------|
| A25TR-70 | 700 | 2038 | 400 | 815 | 18 - 25 | 5000 | 38 |

Package consists of: multi purpose grab, adapter system S-Lock (S70)

Other adapter systems on request.

Multi-Grip

| Type | Width (mm) | Opening (mm) | Volume (m²) | Weight (kg) | Operating weight (t) | Load capacity (kg) | Closing force (kN) |
|------|------------|--------------|-------------|-------------|----------------------|--------------------|--------------------|
| MG20 | 531 | 2279 | 0,52 | 560 | 16 - 22 | 10000 | 33 |

Package consists of: Multi-Grip, adapter system S-Lock (S60)

Other adapter systems on request.

Compactor wheel

| Type | Diameter compactor wheel (mm) | Width compactor wheel (mm) | Weight (kg) | Operating weight (t) |
|------|-------------------------------|----------------------------|-------------|----------------------|
| RC4 | 1000 | 800 | 900 | 14 - 20 |

Package consists of: compactor wheel

Optional adapter systems and other widths on request.